

# Miniature Device LEDs

## Explanation of Part Number:

$\frac{H}{\textcircled{1}}$   $\frac{T}{\textcircled{2}}$   $\frac{L}{\textcircled{3}}$   $\frac{B}{\textcircled{4}}$   $\frac{2}{\textcircled{5}}$  -  $\frac{4}{\textcircled{4}}$   $\frac{3}{\textcircled{5}}$

### ① Miniature device products kinds:

HTL: top lamp LEDs.  
HML: miniature axial LEDs.  
HSOT: SOT23 package LEDs.

### ② Shape distinguish:

B: bell (round) type.  
C: cylindrical type.  
R: rectangular type.

### ③ Identification No:

### ⑤ Dice kinds:

according to chip characteristic distinguish.  
see page 24 table 1.

### ④ Lens appearance:

1:colored diffusion.  
2:colored clear.  
3:white diffusion.  
4:water clear.

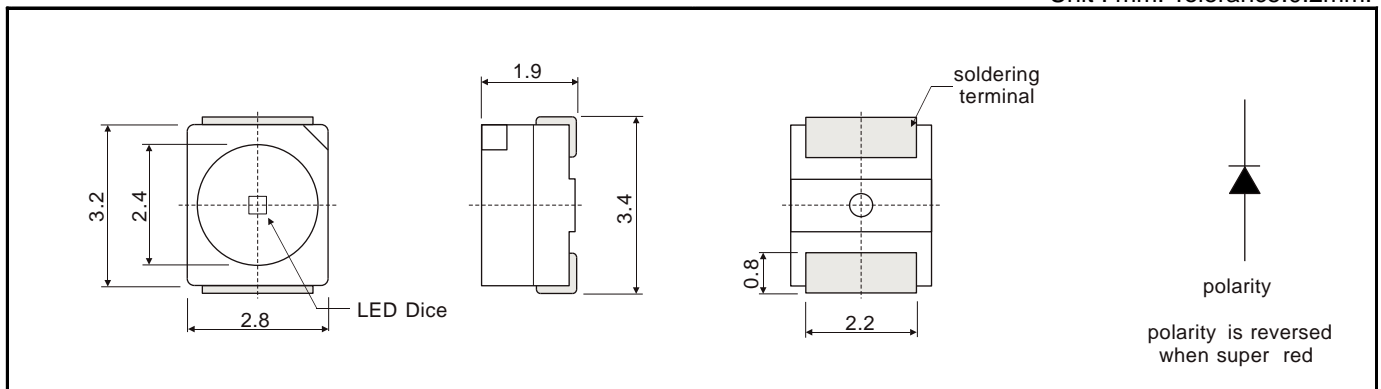
With Reflector Type 3.5mm(L) X 2.7mm(W) X 1.9mm( H)

IF=20mA Ta=25°C

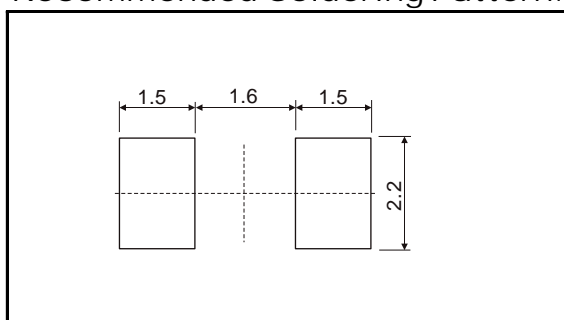
Device No	Color		Wavelength (nm)		VF Typical (V)	Brightness (mcd)		View Angle 2θW
	Emitter	Lens	λp	λd		Minimum	Typical	
HTLB2-43	yellow green	water clear	570	567	2.15	15.0	18.0	120
HTLB2-43CG	super yellow green		575	572	2.20	18.0	25.0	
HTLB2-44	yellow		589	585	2.10	6.0	13.0	
HTLB2-44AY	super yellow		592	590	2.00	35.0	60.0	
HTLB2-45	hi-eff red		625	618	2.05	6.0	10.0	
HTLB2-45AO	super orange		620	615	2.00	35.0	60.0	
HTLB2-45AOR	super fresh red		635	626	2.00	35.0	60.0	
HTLB2-46DR	super red		660	643	1.80	13.0	25.0	
HTLB2-46CR	super red		660	643	1.80	25.0	40.0	
HTLB2-46AR	super red		660	645	1.86	35.0	60.0	
HTLB2-47	amber		610	606	2.05	7.0	12.0	
HTLB2-47AA	super amber		607	605	2.00	35.0	60.0	
HTLB2-48CB	super blue		468	470	3.8	25.0	40.0	

## Dimension:

Unit : mm. Tolerance:0.2mm.



## Recommended Soldering Pattern:



## Tape Specifications: (3,000pcs/Reel)

