

Surface Mount LEDs

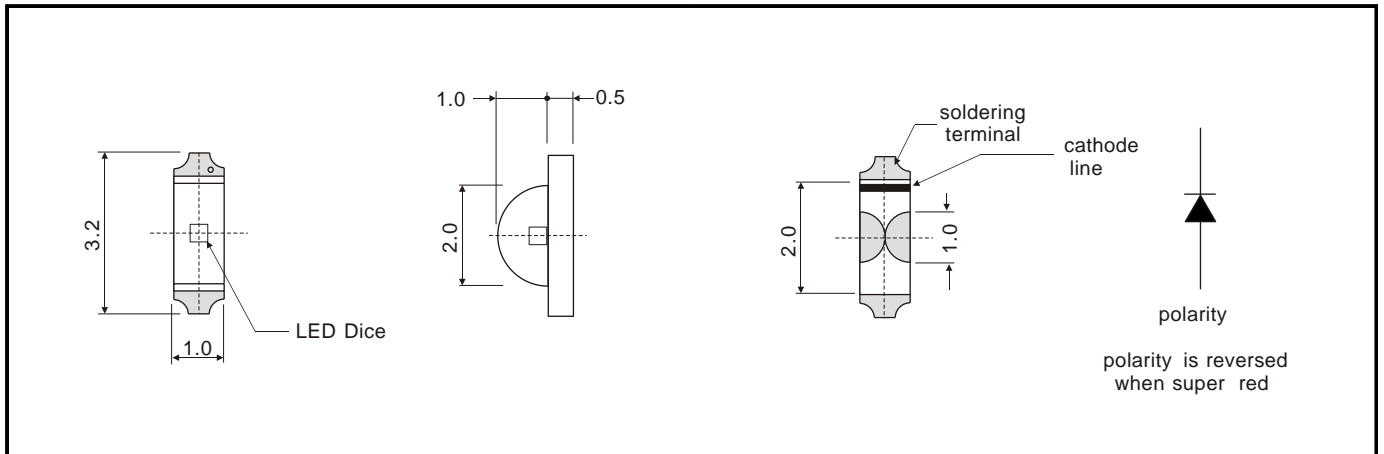
Right Angle Type 3.2mm(L) X 1.0mm(W) X 1.5mm(H)

IF=20mA Ta=25°C

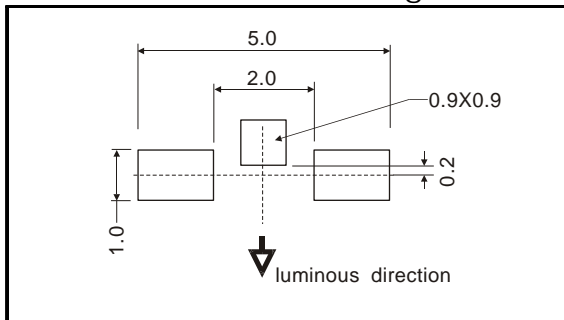
Device No	Color		Wavelength (nm)		VF Typical (V)	Brightness (mcd)		View Angle 2θW
	Emitter	Lens	λp	λd		Minimum	Typical	
HCL-1532	hi-red	white diffused	700	658	2.20	0.7	2.7	120
HCL-1533	yellow green	white diffused	570	567	2.15	6.0	13.5	
HCL-1533SG	standard green		567	564	2.15	3.5	7.0	
HCL-1533PG	pure green	white diffused	557	560	2.25	1.8	3.9	
HCL-1534	yellow	white diffused	589	585	2.10	3.5	7.5	
HCL-1535	hi-eff red	white diffused	625	618	2.05	6.0	13.5	
HCL-1536DR	super red	white diffused	660	643	1.80	11.0	25.5	
HCL-1536CR	super red	white diffused	660	643	1.80	15.0	37.5	
HCL-1537	amber	white diffused	610	606	2.05	3.0	6.0	

Dimension:

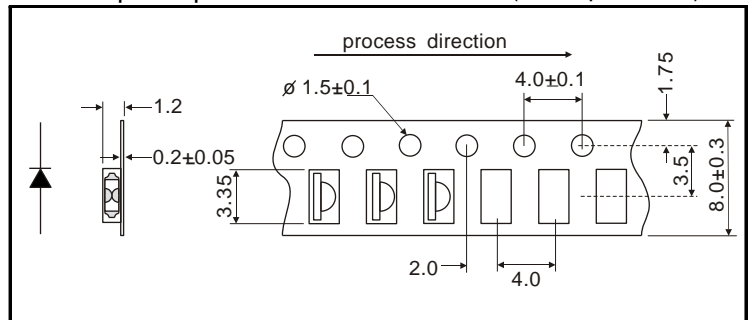
Unit : mm. Tolerance:0.2mm.



Recommended Soldering Pattern:



Tape Specifications: (3,000pcs/Reel)



ELPROMA NL., PHONE +31 (0)343 - 518724, FAX +31 (0)343 - 512286