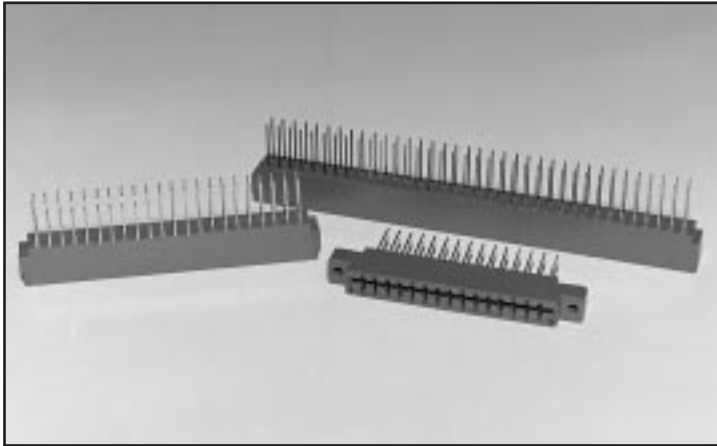


# .156

## Contact Centers Edgecard Connectors .025 Long Wire Wrap Contacts

U.L. APPROVED E78000 (S)

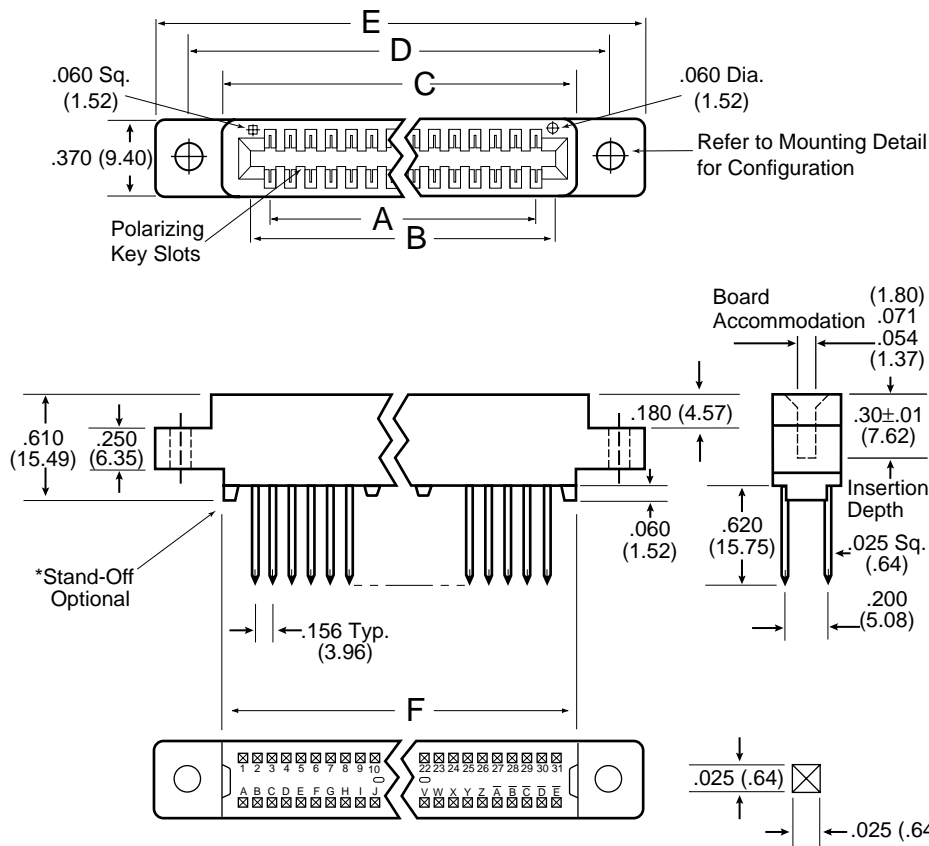
### Part Number Description



MPS or MP	-	0156	-	10	-	D	W	-	5	K	Z
Selective Gold Plating											
Micro Plastics											
Contact Spacing											
Number of Contacts per row											
Dual Readout						D					
.025 Square Contacts											
.125 Flush Mounting Holes									1		
4-40 Flush Threaded Inserts									2		
No. Mounting Ears									4		
.125 Dia. Raised Mounting Ears									5		
4-40 Thread Insert Mount									6		
Tin Plated Tails for MPS Style all Tin Plated for MP Style											
With Stand-Off											

\* For No Stand-Off – Do Not Use Mod. Code 'Z'

### Dimensions



### General Information

#### CONTACT FORCES PER MIL-C-21097C

#### MATERIALS/FINISHES:

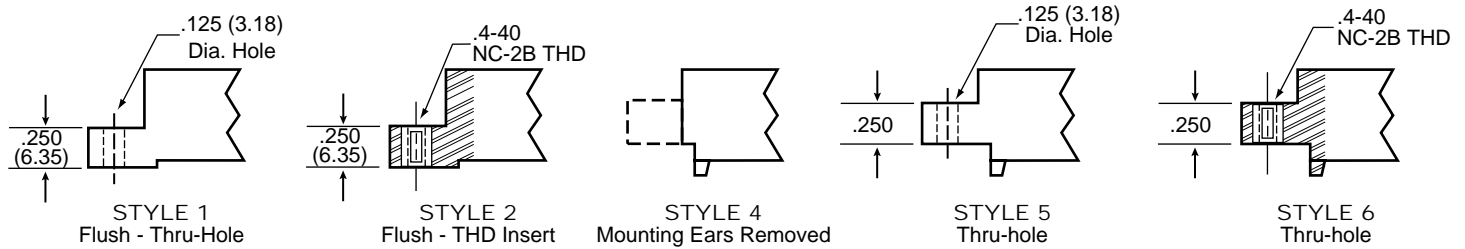
- **Insulator:** Glass filled polyester (G.E. Valox 420-SEO or Equiv.)  
**Color:** Blue U.L. Approved\*  
Ryton R-4 available upon request for Hi-Temp Applications.
- **Keys:** Nylon, **Color:** White
- **Contacts:** Phosphor Bronze
- **Contact Finishes:** 'MP' style is .000010 gold per MIL-G-45204 over nickel covering entire contact surface. 'MPS' style is CA 725 copper alloy. .000010 to .000015 gold (Western Electric Type 1) over .000030 nickel on bellows face only, tails are tin/lead plated.
- **Hardware:** Nickel plated brass.

**NOTE:** Various insulator materials, colors, plating material thickness and sizes available upon request.

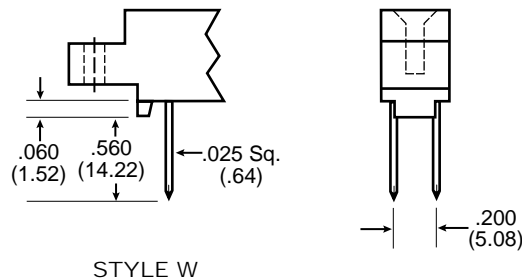
# High Profile

.156 x .200 ROW

## Mounting Styles-Detail G \* NOTE: Additional mounting styles and hole sizes available upon request.



## Termination Styles-Detail H



STYLE W

## Polarizing Key (Between Contact Positions)

Polarizing Key  
ordered separately  
P/N 04-0004-000



## Part Numbers/Dimensions

PART NUMBER	NO. OF CONT.	** INCHES						** MILLIMETERS					
		A ±.010	B ±.010	C ±.015	D ±.015	E ±.020	F ±.015	A ±0.25	B ±0.25	C ±0.38	D ±0.38	E ±0.51	F ±0.20
MP-0156-06-DW-*	6/12	.780	1.082	1.221	1.534	1.782	1.030	19.81	27.48	31.01	38.96	45.26	26.62
MP-0156-10-DW-*	10/20	1.404	1.706	1.845	2.158	2.406	1.654	35.66	43.33	46.86	54.81	61.11	42.01
MP-0156-12-DW-*	12/24	1.716	2.018	2.157	2.470	2.718	1.966	43.59	51.26	54.79	62.74	69.04	49.94
MP-0156-15-DW-*	15/30	2.184	2.486	2.625	2.938	3.187	2.434	55.47	63.14	66.68	74.63	80.95	61.82
MP-0156-18-DW-*	18/36	2.652	2.954	3.093	3.406	3.656	2.902	67.36	75.03	78.56	86.51	92.86	73.71
MP-0156-22-DW-*	22/44	3.276	3.578	3.717	4.030	4.330	3.526	83.21	90.88	94.41	102.36	109.98	89.56
MP-0156-24-DW-*	24/48	3.588	3.890	4.029	4.342	4.642	3.838	91.14	98.81	102.34	110.29	117.91	97.49
MP-0156-25-DW-*	25/50	3.744	4.046	4.185	4.492	4.798	3.994	95.10	102.77	106.30	114.10	121.87	101.45
MP-0156-28-DW-*	28/56	4.212	4.514	4.653	4.966	5.216	4.462	106.98	114.66	118.19	126.14	132.49	113.34
MP-0156-30-DW-*	30/60	4.524	4.826	4.965	5.278	5.528	4.774	114.91	122.58	126.11	134.06	140.41	121.26
MP-0156-31-DW-*	31/62	4.680	4.982	5.121	5.434	5.684	4.930	118.87	126.54	130.07	138.02	144.37	125.22
MP-0156-36-DW-*	36/72	5.460	5.762	5.901	6.214	6.464	5.710	138.68	146.36	149.89	157.84	164.19	145.03
MP-0156-40-DW-*	40/80	6.084	6.386	6.525	6.838	7.088	6.334	154.53	162.20	165.74	173.69	180.04	160.88
MP-0156-43-DW-*	43/86	6.552	6.854	6.993	7.306	7.556	6.802	166.42	174.09	177.62	185.57	191.92	172.77

\*NOTE: Add mounting and termination style digits to part number.  
\*\* .020 longer card slot available (MOD. 'E')