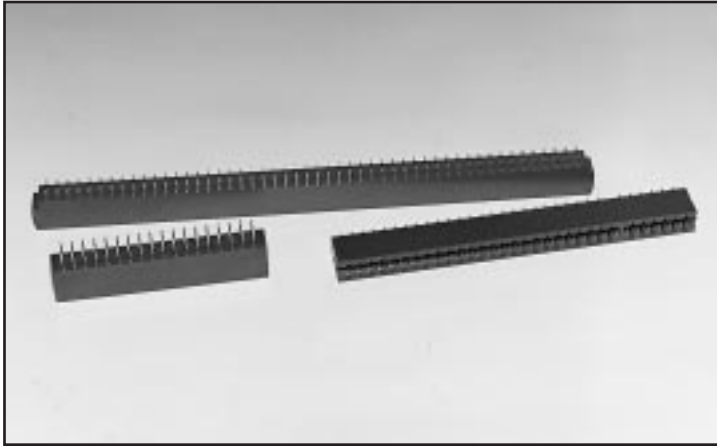


# .150

## Contact Centers Edgecard Connectors .025 Short Square Contacts or .026 Short Round Contacts

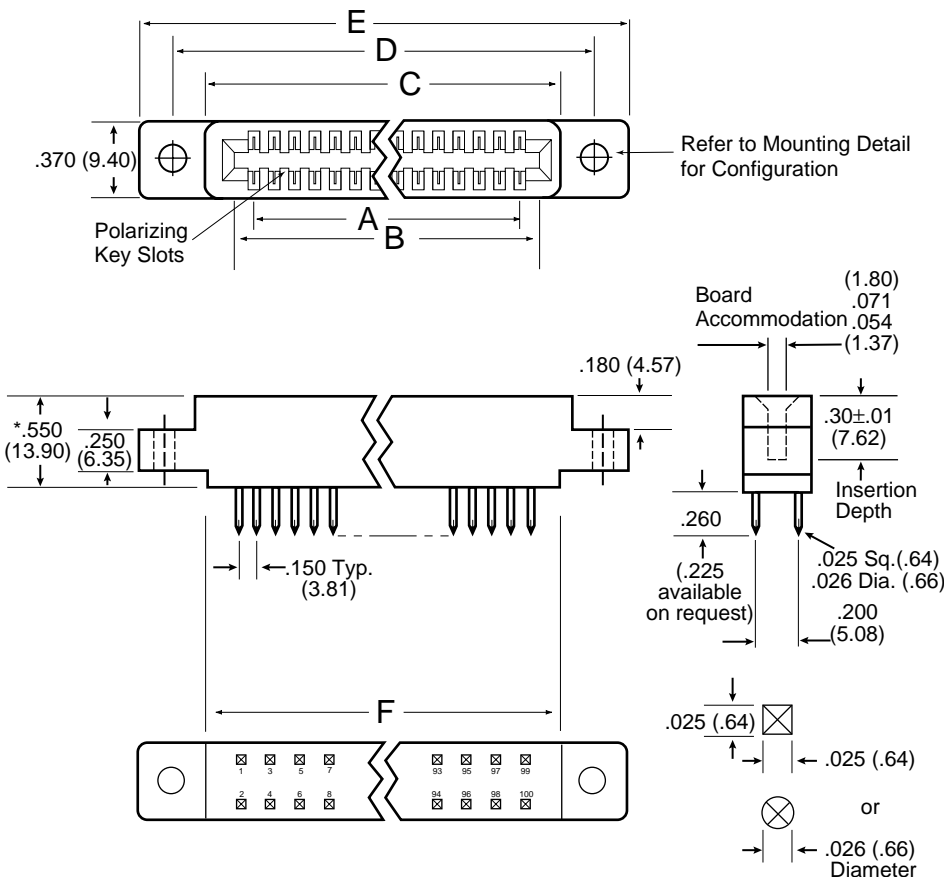
U.L. APPROVED E78000 (S)

### Part Number Description



	MPS or MP	- 0150-	10 -	D *	- 4	H	K
Selective Plating	_____	_____	_____	_____	_____	_____	_____
Micro Plastics	_____	_____	_____	_____	_____	_____	_____
Contact Spacing	_____	_____	_____	_____	_____	_____	_____
Number of Contacts per row	_____	_____	_____	_____	_____	_____	_____
Dual Readout	D	_____	_____	_____	_____	_____	_____
.025 Short Square Contact	_____	_____	_____	_____	_____	W	_____
.026 Short Round Contact	_____	_____	_____	_____	_____	R	_____
.125 Flush Mounting Holes	_____	_____	_____	_____	_____	1	_____
4-40 Flush Threaded Inserts	_____	_____	_____	_____	_____	2	_____
No. Mounting Ears	_____	_____	_____	_____	_____	4	_____
.125 Dia. Raised Mounting Ears	_____	_____	_____	_____	_____	5	_____
4-40 Threaded Insert Mount	_____	_____	_____	_____	_____	6	_____
Short .025 Square Contacts or Short .026 Round Contacts	_____	_____	_____	_____	_____	_____	_____
(.225 Long Available - Mod. Code H (.225) - on Request)	_____	_____	_____	_____	_____	_____	_____
Tin Plated Tails for MPS Style, all Tin Plated for MP Style	_____	_____	_____	_____	_____	_____	_____

### Dimensions



\* Consult factory for body height dimensions for 25, 32 and 50 positions

### General Information

**CONTACT FORCES PER MIL-C-21097C**

#### MATERIALS/FINISHES:

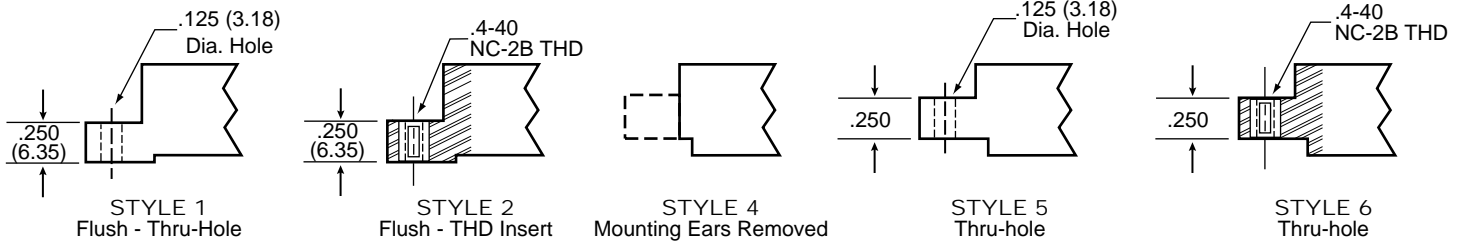
- **Insulator:** Glass filled polyester (G.E. Valox 420-SEO or Equiv.)
- **Color:** Blue (Black or Green available upon request)
- **Keys:** Nylon, **Color:** White
- **Contacts:** Phosphor Bronze
- **Contact Finishes:** (MP Version) .000010 gold per MIL-G-45204 type II over nickel (MPS Version) CA 725 copper alloy .000010 to .000015 gold; (Western Electric Type 1) over .000030 nickel on bellows face only. Tails are tin/lead plated.
- **Hardware:** Nickel plated brass.

**NOTE:** Various insulator materials, colors, plating material, thickness and sizes available upon request.

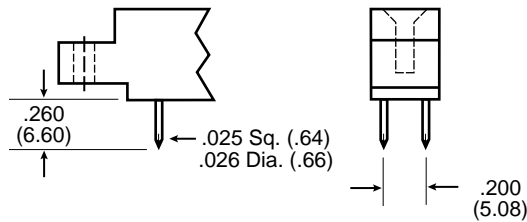
# High Profile

.150 x .200 ROW

## Mounting Styles-Detail G \* NOTE: Additional mounting styles and hole sizes available upon request.



## Termination Styles-Detail H

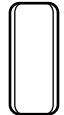


STYLE R OR W (MOD H)

## Polarizing Key

(Between Contact Positions)

Polarizing Key  
ordered separately  
P/N 04-0004-000



## Part Numbers/Dimensions

PART NUMBER	NO. OF CONT.	INCHES						MILLIMETERS					
		A ±.010	B ±.010	C ±.015	D ±.015	E ±.020	F ±.015	A ±0.25	B ±0.25	C ±0.38	D ±0.38	E ±0.51	F ±0.20
MP-0150-18-D*-*H*	18/26	2.550	2.850	2.990	3.300	3.550	2.800	64.77	72.39	75.95	83.82	90.17	71.12
MP-0150-25-D*-*H*	25/50	3.600	3.900	4.040	—	—	3.850	91.44	99.06	102.62	—	—	97.79
MP-0150-26-D*-*H*	26/52	3.750	4.050	4.190	4.500	4.750	4.000	95.25	102.87	106.43	114.30	120.65	101.60
MP-0150-28-D*-*H*	28/56	4.050	4.350	4.490	4.800	5.050	4.300	102.87	110.49	114.05	121.92	128.27	109.22
MP-0150-32-D*-*H*	32/64	4.650	4.950	5.090	—	—	4.900	118.11	125.73	129.29	—	—	124.46
MP-0150-50-D*-*H*	50/100	7.350	7.650	7.800	—	—	7.600	186.69	194.31	198.12	—	—	193.04

\*NOTE: Add mounting and termination style digits to part number.  
\*\* .020 longer card slot available (MOD. 'E')