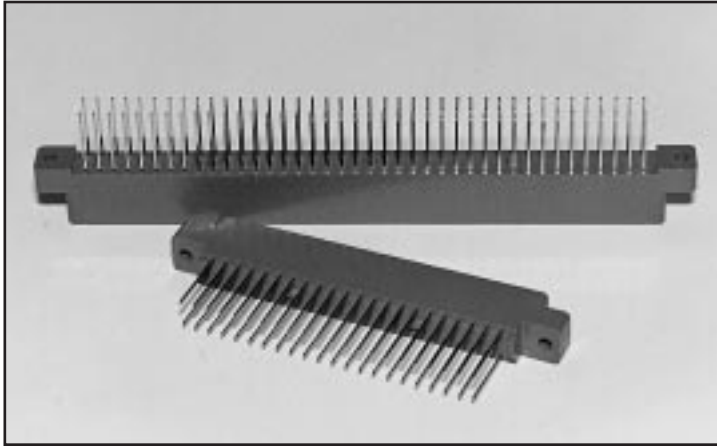


# .125

## Contact Centers Edgecard Connectors .025 Long Wire Wrap Contacts

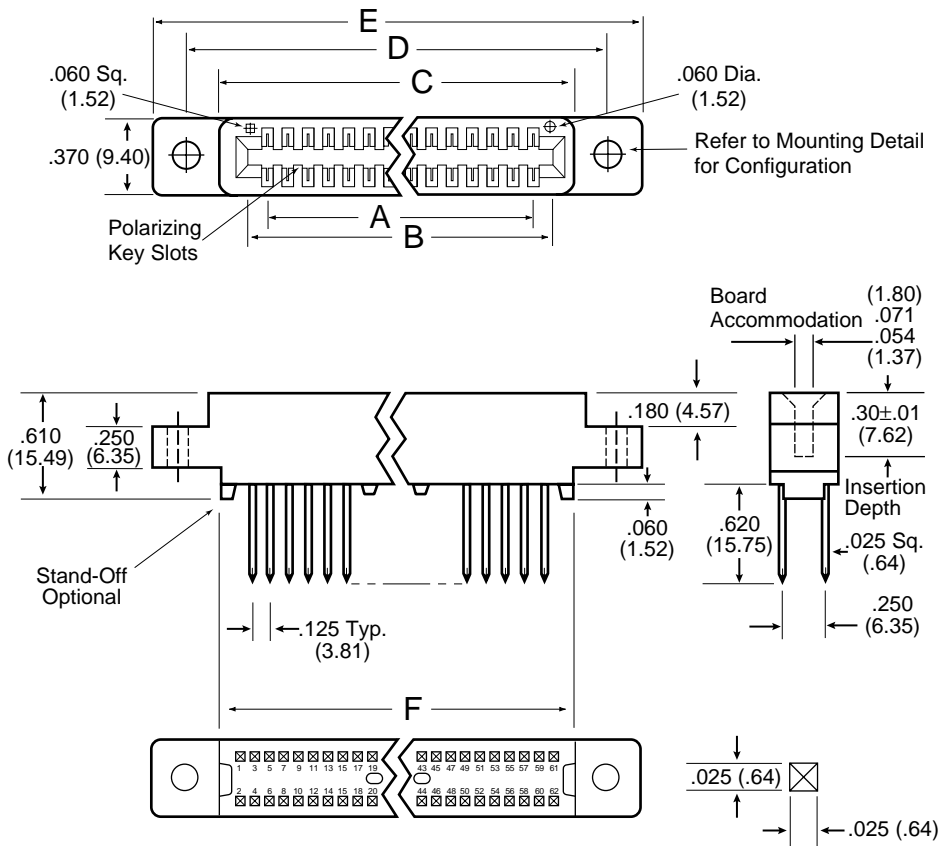
U.L. APPROVED E78000 (S)

### Part Number Description



		MPS or MP	- 0125	- 10	- D W	- 5 K
Selective Gold Plating	—					
STD All Gold Plating	—					
Contact Spacing	—					
Number of Contacts per row	—					
Dual Readout	D					
.025 Sq. (.64mm) Wire Wrap	—					
.125 Flush Mounting Holes	1					
4-40 Flush Threaded Inserts	2					
No. Mounting Ears	4					
.125 Dia. Mounting Hole	5					
4-40 Thread Insert Mount	6					
Tin Plated Tails for MPS Style						
						all Tin Plated for MP Style

### Dimensions



### General Information

**CONTACT FORCES PER MIL-C-21097C**

#### MATERIALS/FINISHES:

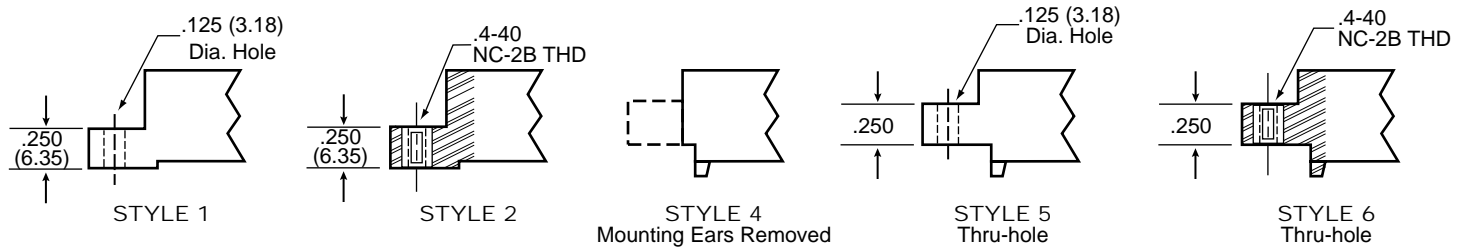
- **Insulator:** Glass filled polyester (G.E. Valox 420-SEO or Equiv.)  
**Color:** Blue U.L. Approved\*  
Ryton R-4 available upon request for Hi-Temp Applications.
- **Keys:** Nylon, **Color:** White
- **Contacts:** Phosphor Bronze
- **Contact Finishes:** 'MP' style is .000010 gold per MIL-G-45204 over nickel covering entire contact surface. 'MPS' style is CA 725 copper alloy. .000010 to .000015 gold (Western Electric Type 1) over .000030 nickel on bellows face only, tails are tin/lead plated.
- **Hardware:** Nickel plated brass.

**NOTE:** Various insulator materials, colors, plating material thickness and sizes available upon request.

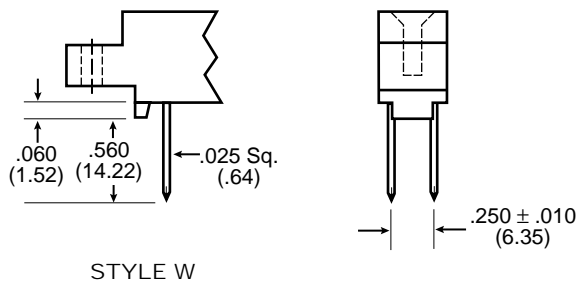
# High Profile

.125 x .250 ROW

Mounting Styles-Detail G \* NOTE: Additional mounting styles and hole sizes available upon request.



## Termination Styles-Detail H



## Polarizing Key (Between Contact Positions)

Polarizing Key  
ordered separately  
P/N 04-0004-000



## Part Numbers/Dimensions

PART NUMBER	NO. OF CONT.	INCHES						MILLIMETERS					
		A ±.010	B ±.010	C ±.015	D ±.015	E ±.020	F ±.015	A ±0.25	B ±0.25	C ±0.38	D ±0.38	E ±0.51	F ±0.38
MP-0125-06-DW-*	6/12	.625	.875	1.035	1.295	1.555	.875	15.88	22.23	26.29	32.89	39.50	15.88
MP-0125-10-DW-*	10/20	1.125	1.375	1.535	1.795	2.055	1.375	28.58	34.93	38.99	45.59	52.20	34.93
MP-0125-15-DW-*	15/30	1.750	2.000	2.160	2.420	2.680	2.000	44.45	50.80	54.86	61.47	68.07	50.80
MP-0125-18-DW-*	18/36	2.125	2.375	2.535	2.795	3.055	2.375	53.98	60.33	64.39	70.99	77.60	60.33
MP-0125-22-DW-*	22/44	2.625	2.875	3.035	3.295	3.555	2.875	66.68	73.03	77.09	83.69	90.30	73.03
MP-0125-25-DW-*	25/50	3.000	3.250	3.410	3.670	3.930	3.250	76.20	82.55	86.61	93.21	99.82	76.20
MP-0125-28-DW-*	28/56	3.375	3.625	3.785	4.045	4.305	3.625	85.73	92.08	96.14	102.74	109.35	92.08
MP-0125-30-DW-*	30/60	3.625	3.875	4.035	4.295	4.555	3.875	92.08	98.43	102.49	109.09	115.70	98.43
MP-0125-31-DW-*	31/62	3.750	4.000	4.160	4.420	4.680	4.000	92.25	101.60	105.66	112.27	118.87	101.60
MP-0125-32-DW-*	32/64	3.875	4.125	4.285	4.545	4.805	4.125	98.43	104.78	108.84	115.44	122.05	104.78
MP-0125-35-DW-*	35/70	4.250	4.500	4.660	4.920	5.180	4.500	107.95	114.30	118.36	124.97	131.57	114.30
MP-0125-36-DW-*	36/72	4.375	4.625	4.785	5.045	5.305	4.625	111.13	117.48	121.54	128.14	134.75	117.48
MP-0125-40-DW-*	40/80	4.875	5.125	5.285	5.545	5.805	5.125	123.83	130.18	134.24	140.84	147.45	130.18
MP-0125-43-DW-*	43/86	5.250	5.500	5.660	5.920	6.180	5.500	133.35	139.70	143.76	150.37	156.97	139.70
MP-0125-44-DW-*	44/88	5.375	5.625	5.785	6.045	6.305	5.625	136.52	142.87	146.93	153.54	160.14	142.87
MP-0125-49-DW-*	49/98	6.000	6.250	6.410	6.670	6.930	6.250	152.40	158.75	162.81	169.42	176.02	158.75
MP-0125-50-DW-*	50/100	6.125	6.375	6.535	6.795	7.055	6.375	155.58	161.93	165.99	172.59	179.20	161.93

\*NOTE: Add mounting and termination style digits to part number.