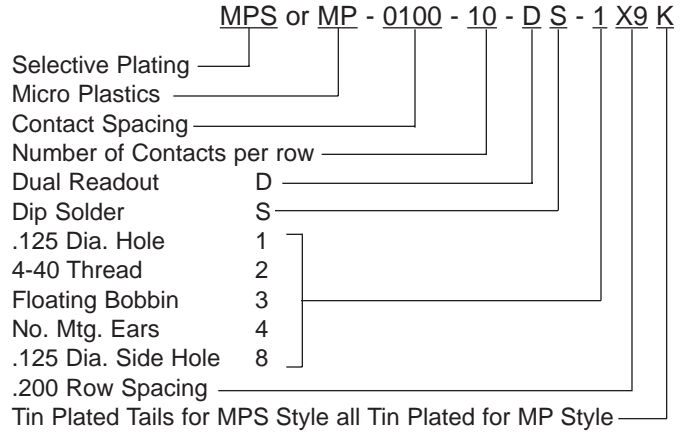
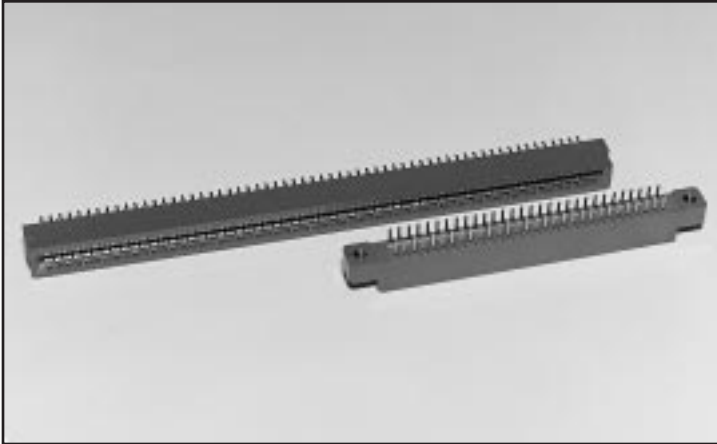


.100

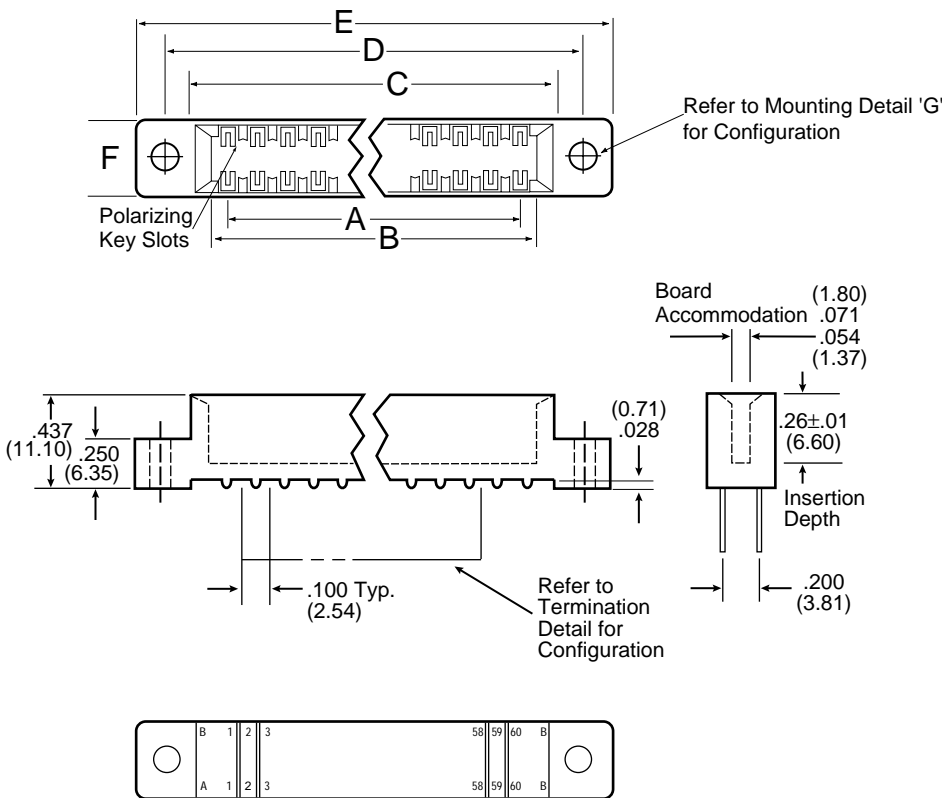
Contact Centers Edgecard Connectors Dip Solder

U.L. APPROVED E78000 (S)

Part Number Description



Dimensions



Contact Identification
 B 1, 2, 3 60B
 A 1, 2, 3 60A

General Information

CONTACT FORCES PER MIL-C-21097C

MATERIALS/FINISHES:

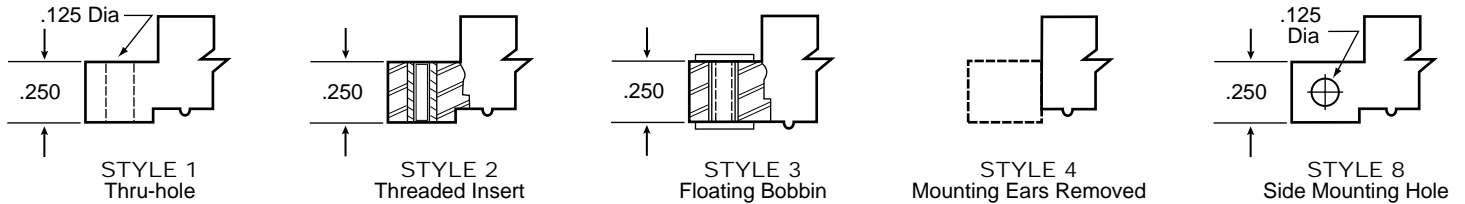
- **Insulator:** Glass filled polyester (G.E. Valox 420-SEO or Equiv.)
- **Color:** Blue U.L. Approved* Ryton R-4 available upon request for Hi-Temp Applications.
- **Keys:** Nylon, **Color:** White
- **Contacts:** Bifurcated full bellows style in phosphor bronze material. Beryllium copper and pfinodal materials available upon request for hi-temp applications.
- **Contact Finishes:** 'MP' style is .000010 gold per MIL-G-45204 over nickel covering entire contact surface. 'MPS' style is .000010 to .000015 gold per MIL-G-45204 over nickel on bellows face only, tails are tin plated (must have Mod. Code 'K' with 'MPS' style).
- **Hardware:** Nickel plated brass.

NOTE: Various insulator materials, colors, plating material and thickness available upon request.

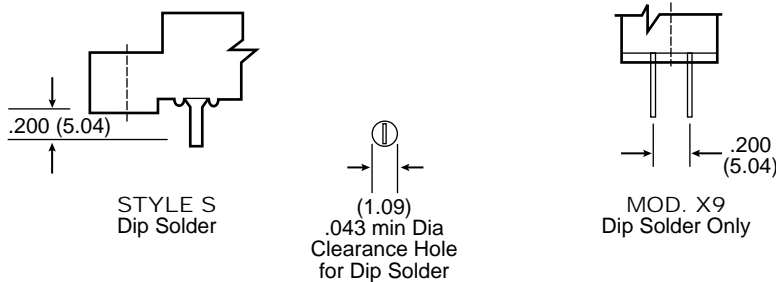
Low Profile

.100 x .200 ROW

Mounting Styles-Detail G * NOTE: Additional mounting styles and hole sizes available upon request.

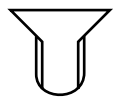


Termination Styles-Detail H



Polarizing Key (Between Contact Positions)

Polarizing Key
ordered separately
P/N 04-0003-000



Part Numbers/Dimensions

PART NUMBER	NO. OF CONT.	INCHES						MILLIMETERS					
		A ±.010	B ±.010	C ±.015	D ±.015	E ±.020	F ±.008	A ±0.25	B ±0.25	C ±0.38	D ±0.38	E ±0.51	F ±0.20
MP-0100-05-D*-X9	5/10	.400	.600	.775	1.075	1.375	.330	10.16	15.24	19.69	27.31	34.93	8.38
MP-0100-06-D*-X9	6/12	.500	.700	.875	1.175	1.475	.330	12.70	17.78	22.23	29.85	37.47	8.38
MP-0100-08-D*-X9	8/16	.700	.900	1.075	1.375	1.675	.330	17.78	22.86	27.31	34.93	42.55	8.38
MP-0100-10-D*-X9	10/20	.900	1.100	1.275	1.575	1.875	.330	22.86	27.94	32.39	40.01	47.63	8.38
MP-0100-12-D*-X9	12/24	1.100	1.300	1.475	1.775	2.075	.330	27.94	33.02	37.47	45.09	52.71	8.38
MP-0100-13-D*-X9	13/26	1.200	1.400	1.575	1.875	2.175	.330	30.48	35.56	40.01	47.63	55.25	8.38
MP-0100-15-D*-X9	15/30	1.400	1.600	1.775	2.075	2.375	.330	35.56	40.64	45.09	52.71	60.33	8.38
MP-0100-18-D*-X9	18/36	1.700	1.900	2.075	2.375	2.675	.330	43.18	48.26	52.71	60.33	67.95	8.38
MP-0100-19-D*-X9	19/38	1.800	2.000	2.175	2.475	2.775	.330	45.72	50.80	55.25	62.87	70.49	8.38
MP-0100-20-D*-X9	20/40	1.900	2.100	2.275	2.575	2.875	.330	48.26	53.34	57.79	65.41	73.03	8.38
MP-0100-22-D*-X9	22/44	2.100	2.300	2.475	2.775	3.075	.330	53.34	58.42	62.87	70.49	78.75	8.38
MP-0100-25-D*-X9	25/50	2.400	2.600	2.775	3.075	3.375	.330	60.96	66.04	70.49	78.11	85.73	8.38
MP-0100-26-D*-X9	26/52	2.500	2.700	2.875	3.175	3.475	.330	63.50	68.58	73.03	80.65	88.27	8.38
MP-0100-28-D*-X9	28/56	2.700	2.900	3.075	3.375	3.675	.330	68.58	73.66	78.11	85.73	93.35	8.38
MP-0100-30-D*-X9	30/60	2.900	3.100	3.275	3.575	3.875	.330	73.66	78.74	83.19	90.81	98.43	8.38
MP-0100-31-D*-X9	31/62	3.000	3.200	3.375	3.675	3.975	.330	76.20	81.28	85.73	93.35	100.97	8.38
MP-0100-35-D*-X9	35/70	3.400	3.600	3.775	4.075	4.375	.400	86.36	91.44	95.89	103.51	111.13	10.16
MP-0100-36-D*-X9	36/72	3.500	3.700	3.875	4.175	4.475	.400	88.90	93.98	98.43	106.05	113.67	10.16
MP-0100-40-D*-X9	40/80	3.900	4.100	4.275	4.575	4.875	.400	99.06	104.14	108.59	116.21	123.83	10.16
MP-0100-43-D*-X9	43/86	4.200	4.400	4.575	4.875	5.175	.400	106.68	111.76	116.21	123.83	131.45	10.16
MP-0100-44-D*-X9	44/88	4.300	4.500	4.675	4.975	5.275	.400	109.22	114.30	118.75	126.37	133.99	10.16
MP-0100-50-D*-X9	50/100	4.900	5.100	5.275	5.575	5.875	.400	124.46	129.54	133.99	141.61	149.23	10.16
MP-0100-60-D*-X9	60/120	5.900	6.100	6.275	6.575	6.875	.400	149.86	154.94	159.39	167.01	174.63	10.16

*NOTE: Add mounting and termination style digits to part number.