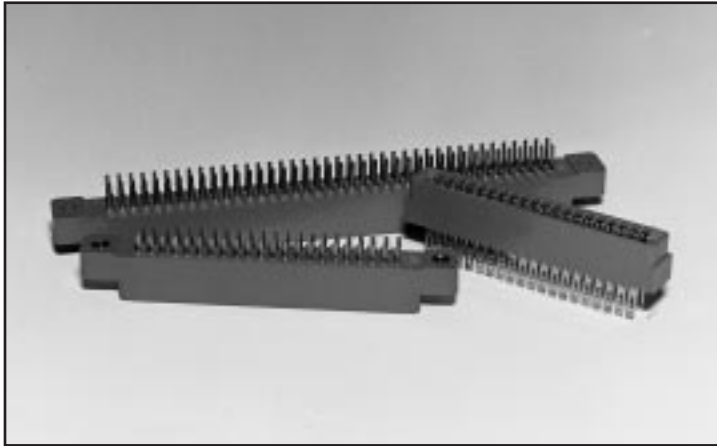


# .100

## Contact Centers Edgecard Connectors Dip Solder and Pierced Eyelet

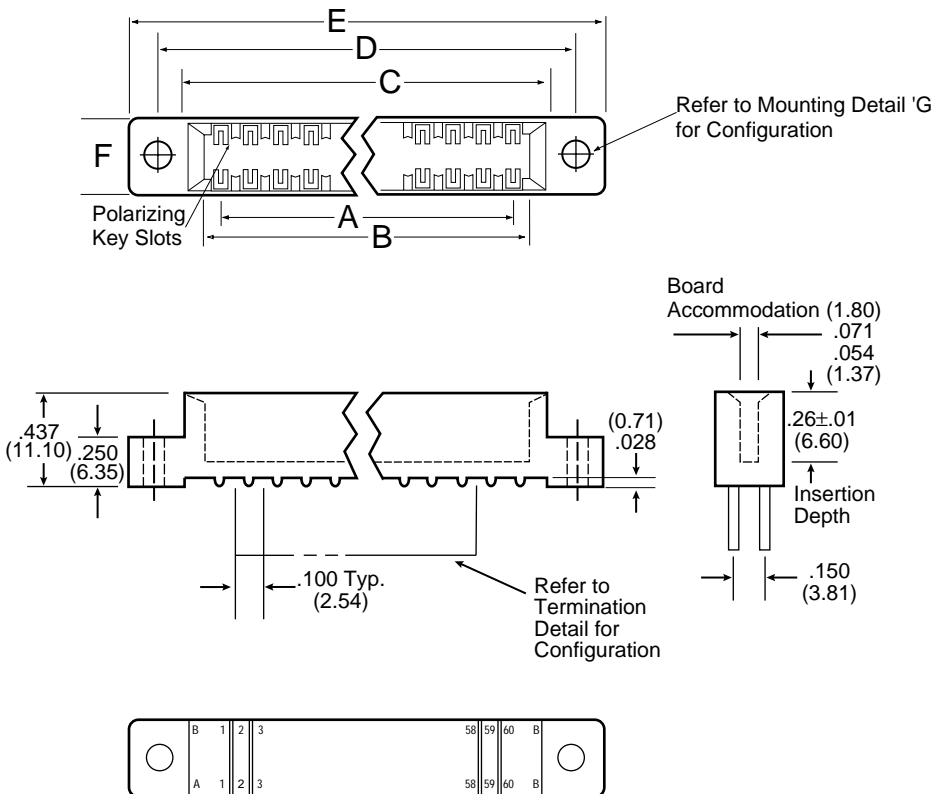
U.L. APPROVED E78000 (S)



### Part Number Description

	*MPS or MP - 0100 - 10 - D P - 1 K
Selective Plating	_____
Micro Plastics	_____
Contact Spacing	_____
Number of Contacts per row	_____
Dual Readout	D _____
Pierced Eyelet	P _____
Dip Solder	S _____
.125 Dia. Hole	1 _____
4-40 Thread	2 _____
Floating Bobbin	3 _____
No. Mtg. Ears	4 _____
.125 Dia. Side Hole	8 _____
Tin Plated Tails for MPS Style all Tin Plated for MP Style	_____
* MPS - For Dip Solder Only	

### Dimensions



**Contact Identification**  
 B 1, 2, 3 ..... 60B  
 A 1, 2, 3 .....60A

### General Information

**CONTACT FORCES PER MIL-C-21097C**

**MATERIALS/FINISHES:**

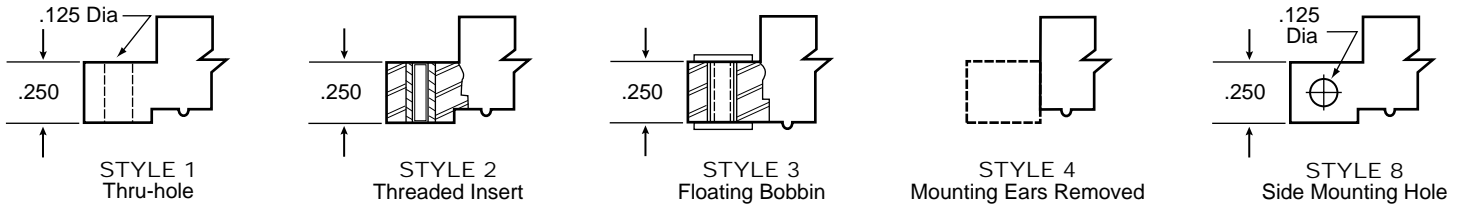
- **Insulator:** Glass filled polyester (G.E. Valox 420-SEO or Equiv.)  
**Color:** Blue U.L. Approved\* Ryton R-4 available upon request for Hi-Temp Applications.
- **Keys:** Nylon, **Color:** White
- **Contacts:** Bifurcated full bellows style in phosphor bronze material. Beryllium copper and pfinodal materials available upon request for hi-temp applications.
- **Contact Finishes:** 'MP' style is .000010 gold per MIL-G-45204 over nickel covering entire contact surface. 'MPS' style is .000015 to .000015 gold per MIL-G-45204 over nickel on bellows face only, tails are tin plated (must have Mod. Code 'K' with 'MPS' style).
- **Hardware:** Nickel plated brass.

**NOTE:** Various insulator materials, colors, plating material and thickness available upon request.

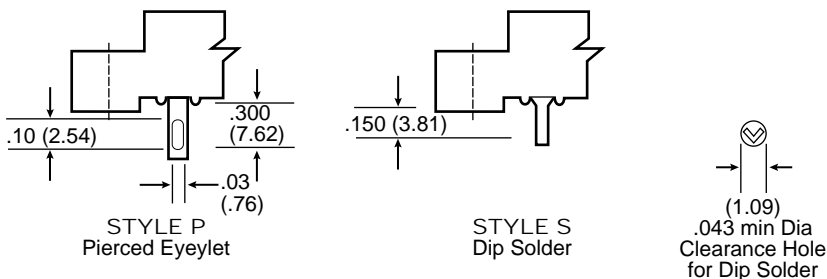
# Low Profile

.100 x .150 ROW

## Mounting Styles-Detail G \* NOTE: Additional mounting styles and hole sizes available upon request.



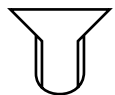
## Termination Styles-Detail H



## Polarizing Key

(Between Contact Positions)

Polarizing Key  
ordered separately  
P/N 04-0003-000



## Part Numbers/Dimensions

PART NUMBER	NO. OF CONT.	INCHES						MILLIMETERS					
		A ±.010	B ±.010	C ±.015	D ±.015	E ±.020	F ±.008	A ±0.25	B ±0.25	C ±0.38	D ±0.38	E ±0.51	F ±0.20
MP-0100-05-D*-*	5/10	.400	.600	.775	1.075	1.375	.330	10.16	15.24	19.69	27.31	34.93	8.38
MP-0100-06-D*-*	6/12	.500	.700	.875	1.175	1.475	.330	12.70	17.78	22.23	29.85	37.47	8.38
MP-0100-08-D*-*	8/16	.700	.900	1.075	1.375	1.675	.330	17.78	22.86	27.31	34.93	42.55	8.38
MP-0100-10-D*-*	10/20	.900	1.100	1.275	1.575	1.875	.330	22.86	27.94	32.39	40.01	47.63	8.38
MP-0100-12-D*-*	12/24	1.100	1.300	1.475	1.775	2.075	.330	27.94	33.02	37.47	45.09	52.71	8.38
MP-0100-13-D*-*	13/26	1.200	1.400	1.575	1.875	2.175	.330	30.48	35.56	40.01	47.63	55.25	8.38
MP-0100-15-D*-*	15/30	1.400	1.600	1.775	2.075	2.375	.330	35.56	40.64	45.09	52.71	60.33	8.38
MP-0100-18-D*-*	18/36	1.700	1.900	2.075	2.375	2.675	.330	43.18	48.26	52.71	60.33	67.95	8.38
MP-0100-19-D*-*	19/38	1.800	2.000	2.175	2.475	2.775	.330	45.72	50.80	55.25	62.87	70.49	8.38
MP-0100-20-D*-*	20/40	1.900	2.100	2.275	2.575	2.875	.330	48.26	53.34	57.79	65.41	73.03	8.38
MP-0100-22-D*-*	22/44	2.100	2.300	2.475	2.775	3.075	.330	53.34	58.42	62.87	70.49	78.75	8.38
MP-0100-25-D*-*	25/50	2.400	2.600	2.775	3.075	3.375	.330	60.96	66.04	70.49	78.11	85.73	8.38
MP-0100-26-D*-*	26/52	2.500	2.700	2.875	3.175	3.475	.330	63.50	68.58	73.03	80.65	88.27	8.38
MP-0100-28-D*-*	28/56	2.700	2.900	3.075	3.375	3.675	.330	68.58	73.66	78.11	85.73	93.35	8.38
MP-0100-30-D*-*	30/60	2.900	3.100	3.275	3.575	3.875	.330	73.66	78.74	83.19	90.81	98.43	8.38
MP-0100-31-D*-*	31/62	3.000	3.200	3.375	3.675	3.975	.330	76.20	81.28	85.73	93.35	100.97	8.38
MP-0100-35-D*-*	35/70	3.400	3.600	3.775	4.075	4.375	.400	86.36	91.44	95.89	103.51	111.13	10.16
MP-0100-36-D*-*	36/72	3.500	3.700	3.875	4.175	4.475	.400	88.90	93.98	98.43	106.05	113.67	10.16
MP-0100-40-D*-*	40/80	3.900	4.100	4.275	4.575	4.875	.400	99.06	104.14	108.59	116.21	123.83	10.16
MP-0100-43-D*-*	43/86	4.200	4.400	4.575	4.875	5.175	.400	106.68	111.76	116.21	123.83	131.45	10.16
MP-0100-44-D*-*	44/88	4.300	4.500	4.675	4.975	5.275	.400	109.22	114.30	118.75	126.37	133.99	10.16
MP-0100-50-D*-*	50/100	4.900	5.100	5.275	5.575	5.875	.400	124.46	129.54	133.99	141.61	149.23	10.16
MP-0100-60-D*-*	60/120	5.900	6.100	6.275	6.575	6.875	.400	149.86	154.94	159.39	167.01	174.63	10.16

\*NOTE: Add mounting and termination style digits to part number.