

GENERAL SPECIFICATIONS

GENERAL SPECIFICATIONS

OPERATING TEMPERATURE: -30°C to +65°C.

STORAGE TEMPERATURE: -40°C to +85°C.

REVERSE VOLTAGE: Protected to the maximum operating voltage (some models may sound softly when connected to reverse polarity).

SURGE VOLTAGE: 20% over maximum rated voltage for less than 5 minutes.

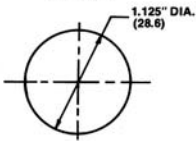
LIFE EXPECTANCY: 10 years under normal operating conditions.

CONSTRUCTION MATERIALS: Case-durable glass-filled polyester or Noryl® plastic. Potting-epoxy.

TERMINATION OPTION: 3" & 6", 18 gauge, stranded wire with vinyl insulation, available upon request.

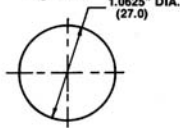
Suggested Hole Patterns

Figure 1



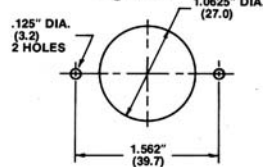
07, 09, 19 Cases Panel Mount with ring nut

Figure 2



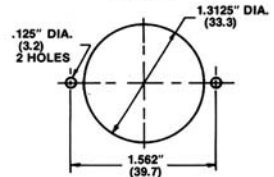
01, 04, 14 Cases Panel Mount with double-sided adhesive foam

Figure 3



01, 04, 14, V01, V04, V14 Cases Panel Mount with 2 #4 self-tapping screws

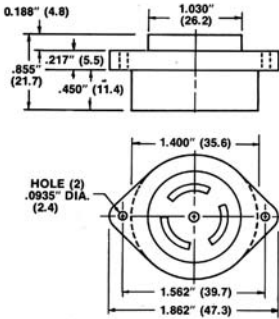
Figure 4



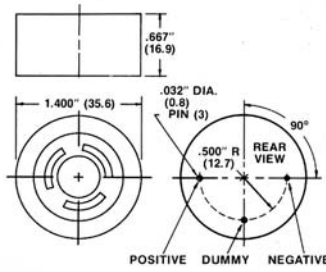
03, 06, 16 Cases Panel Mount with 2 #4 self-tapping screws

CASE DIMENSIONS FOR PAGE 4-8

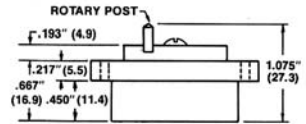
Dimensions are in inches (mm) Tolerances are $\pm 0.15"$ (0.4)



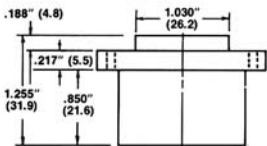
01 CASE



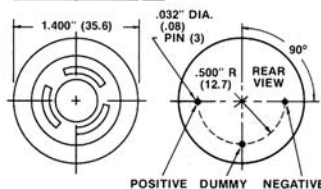
02 CASE



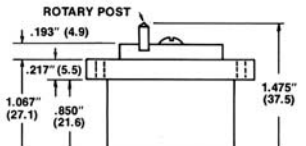
03 CASE



04 CASE



05 CASE



06 CASE