

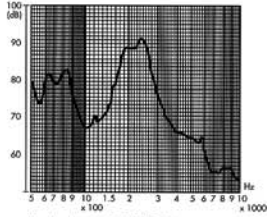
MAGNETIC TRANSDUCERS

EXTERNAL DRIVE TYPE

DIMENSIONS

FREQUENCY RESPONSE

[actual curve of type SDX06]

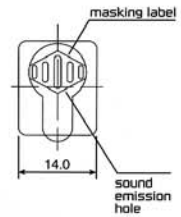


applied voltage : 5 V, 1/2 duty, square wave
distance for measurement : 10cm

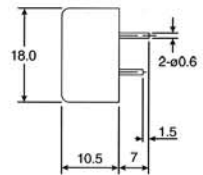


color Black
Noryl SEI-GFN2 Housing Material
Pin Terminal

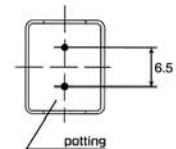
Top View



Side View



Bottom View



all dimensions are in mm

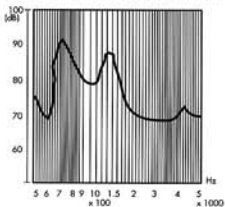
ELECTRICAL SPECIFICATIONS

Model No.	ELTSDX01	ELTSDX06	ELTSDX12
Operating Voltage (V)	1 - 2	3 - 10	6 - 15
Rated Voltage (V)	1.5	6	12
Max. Rated Current (mA)	40	40	40
Coil Resistance (Ω)	14±9	60±9	120±18
*Coil Impedance (Ω)	22	90	170
Min Sound Output (dBA/10cm)	80	85	85
Resonant Frequency (Hz)	2000 ~ 2500 (min. 80dBA)		
Operating Temperature (°C)	-20 ~ +70	-30 ~ +85	-30 ~ +85
Weight (gm.)	7	7	7

1 Value applying rated voltage (2048Hz, 1/2 duty, square wave)
* Value applying (2048Hz, sine wave, measuring current 60µA)

FREQUENCY RESPONSE

[actual curve of type TDX06]



applied voltage : 5 V, 1/2 duty, square wave
distance for measurement : 10cm

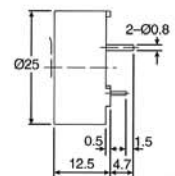


color Black
Noryl SEI-GFN2 Housing Material
Pin Terminal

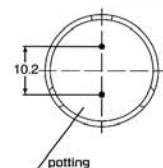
Top View



Side View



Bottom View



all dimensions are in mm

ELECTRICAL SPECIFICATIONS

Model No.	ELTDX06	ELTDX06S	ELTDX12S
Operating Voltage (V)	3 - 5	3 - 8	8 - 14
Rated Voltage (V)	5	6	12
1 Max. Rated Current (mA)	80	70	55
Coil Resistance (Ω)	27±4	36±5	120±15
*Coil Impedance (Ω)	38	48	155
2 Min Sound Output (dBA/10cm)	85	85	85
Resonant Frequency (Hz)	730	1000-1500(min 80dB)	
Reproduced Frequency (Hz)	1000-1500(min 80dB)		
Operating Temperature (°C)	-40 ~ +85	-40 ~ +85	-40 ~ +85
Weight (gm.)	10	10	10

1 Value applying rated voltage TDX06 (730Hz, 1/2 duty, square wave) : TDX06S, 12S (1000Hz, 1/2 duty, square wave)
2 Value applying rated voltage TDX06 (730Hz, 1/2 duty, square wave) : TDX06S, 12S (1000Hz & 1500Hz, 1/2 duty, square wave)
* Value applying (1000Hz, sine wave, measuring current 60µA)