

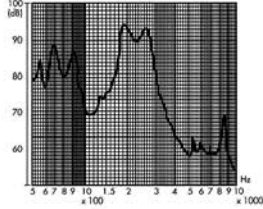
MAGNETIC TRANSDUCERS

EXTERNAL DRIVE TYPE

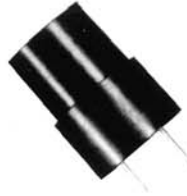
DIMENSIONS

FREQUENCY RESPONSE

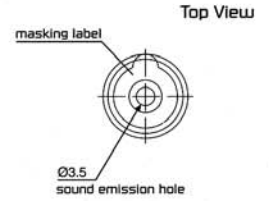
[actual curve of type DB06A]



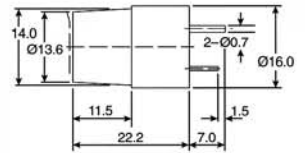
applied voltage : 6 V, 1/2 duty, square wave
distance for measurement : 10cm



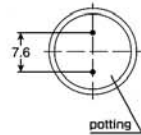
color Black
Noryl SEI-GFN2 Housing Material
Pin Terminal



Side View



Bottom View



all dimensions are in mm

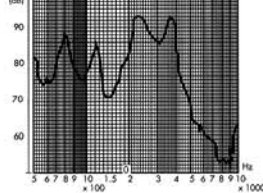
ELECTRICAL SPECIFICATIONS

Model No.	ELTDB01A	ELTDB06A	ELTDB12A
Operating Voltage (V)	1 - 3	3 - 12	6 - 18
Rated Voltage (V)	1.5	6	12
Max. Rated Current (mA)	12	40	40
Coil Resistance (Ω)	27±3	50±5	115±12
Coil Impedance (Ω)	80	110	200
Min Sound Output (dB/10cm)	80	85	85
Resonant Frequency (Hz)	2048	1850-2500(min 80dB)	
Operating Temperature (°C)	-25 ~ +70	-25 ~ +70	-25 ~ +70
Weight (gm.)	7	7	7

* Value applying rated voltage (2048Hz, 1/2 duty, square wave)
* Value applying (2048Hz, sine wave, measuring current 50μA)

FREQUENCY RESPONSE

[actual curve of type DBX]

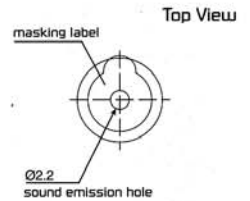


applied voltage : 5 V, 1/2 duty, square wave
distance for measurement : 10cm

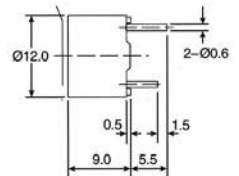


color Black
Noryl SEI - GFN2 Housing Material
Pin Terminal

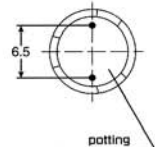
DIMENSIONS



Side View



Bottom View



all dimensions are in mm

ELECTRICAL SPECIFICATIONS

Model No.	ELTDBX01	ELTDBX05	ELTDBX12
Operating Voltage (V)	1 - 2	3 - 8	6 - 15
Rated Voltage (V)	1.5	5	12
Max. Rated Current (mA)	70	40	40
Coil Resistance (Ω)	6.5±1	47±5	140±14
*Coil Impedance (Ω)	16	80	240
Min Sound Output (dB/10cm)	75	85	85
Resonant Frequency (Hz)	2400	2400	2400
Operating Temperature (°C)	-40 ~ +85	-40 ~ +85	-40 ~ +85
Weight (gm.)	2	2	2

* Value applying rated voltage (2400Hz, 1/2 duty, square wave)
* Value applying (2400Hz, sine wave, measuring current 50μA)