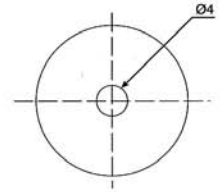


# PIEZO TRANSDUCERS

## EXTERNAL DRIVE TYPE

### DIMENSIONS

Top View

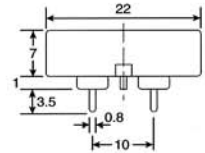


color Black  
ABS or PBT Housing Material  
Pin Terminal

### ELECTRICAL SPECIFICATIONS

Model No.	ELT69PZ22400
Sound Pressure Level	80 dBA min. (3.0V rms sine wave, 10cm, 4000Hz)
Capacitance	15000 pF ± 30% at 1.0KHz
Max. Input Voltage	30V p-p
Operating Temperature	-20 ~ +70°C
Weight	3 g

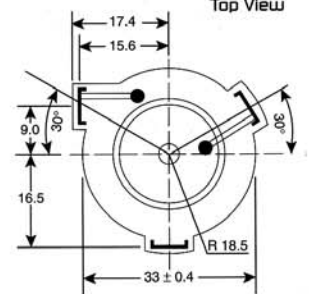
Side View



all dimensions are in mm

### DIMENSIONS

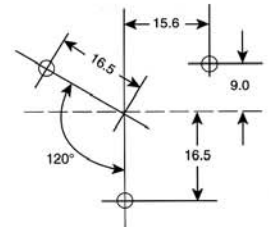
Top View



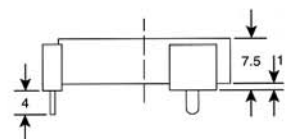
color Black  
ABS Housing Material  
Pin Terminal

### ELECTRICAL SPECIFICATIONS

Model No.	ELT86PZ33100
Sound Pressure Level	70 dBA min. (3.0V rms. sine wave, 10cm, 1000Hz)
Capacitance	60000 pF ± 25% at 1000Hz
Max. Input Voltage	45V p-p
Operating Temperature	-20 ~ +70°C
Weight	8 g



Side View



all dimensions are in mm