

PIEZO TRANSDUCERS

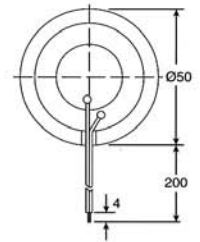
EXTERNAL DRIVE TYPE

DIMENSIONS



color Black
ABS Housing Material
Leadwire Terminal

Top View



ELECTRICAL SPECIFICATIONS

Model No.	ELT49PZ50100A	ELT49PZ50100B
Sound Pressure Level	75 dBA min. (12V p-p square wave, 10cm, 1000Hz)	75 dBA min. (12V p-p square wave, 10cm, 1000Hz)
Current	4 mA max.	6 mA max.
Capacitance	66000 pF ± 30% at 120Hz	120000 pF ± 30% at 120Hz
Max. Input Voltage	40V p-p	40V p-p
Operating Temperature	-20 ~ +70°C	-30 ~ +70°C
Weight	4 g	4 g

Side View



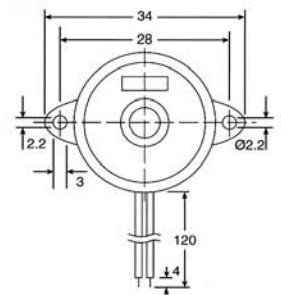
all dimensions are in mm

DIMENSIONS

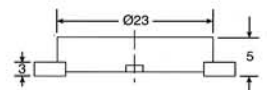


color Black
ABS Housing Material
Leadwire Terminal

Top View



Side View



ELECTRICAL SPECIFICATIONS

Model No.	ELT50PZ23400
Sound Pressure Level	80 dBA min. (12V p-p square wave, 30cm, 4000Hz)
Current	4 mA max. at 4000Hz
Capacitance	24000 pF ± 30% at 120Hz
Max. Input Voltage	40V p-p
Operating Temperature	-20 ~ +60°C
Weight	2 g

all dimensions are in mm