

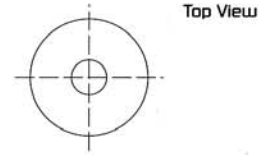
PIEZO TRANSDUCERS

SELF DRIVE TYPE

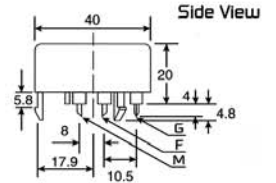
DIMENSIONS



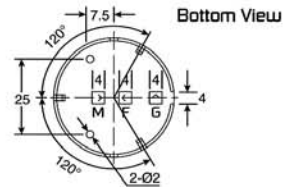
color Black
ABS or Nylon Housing Material
Pin Terminal



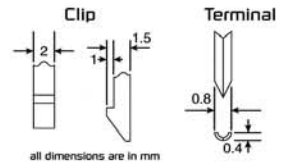
Top View



Side View



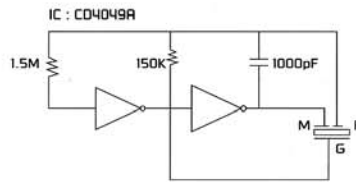
Bottom View



all dimensions are in mm

ELECTRICAL SPECIFICATIONS

Model No.	ELT16PZ3200	
Operating Voltage (V)	4.5 - 15	
Rated Voltage (V)	9	
Max. Rated Current (mA)	15	
Min Sound Output (dBA/30cm)	95	
Frequency (Hz)	3400±500	
Operating Temperature (°C)	-20 - +60	
Weight (gm.)	10	

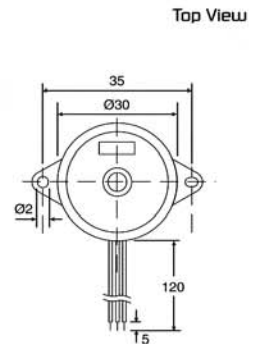


Reference circuit

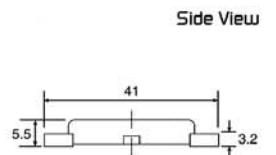
DIMENSIONS



color Black
ABS Housing Material
Leadwire Terminal



Top View



Side View

ELECTRICAL SPECIFICATIONS

Model No.	ELT25PZ30360	
Operating Voltage	2 - 16 VDC	
Rated Voltage	6 VDC	
Max. Rated Current	5 mA	
Min Sound Output	80 dBA at 30cm	
Frequency	3600±500 Hz	
Operating Temperature	-20 - +60°C	
Weight	4 g	

all dimensions are in mm