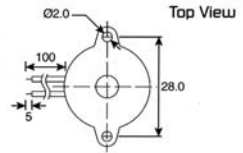


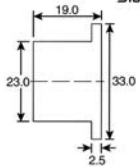
PIEZO BUZZERS

PC BOARD MOUNTING TYPE

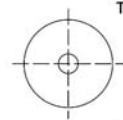
DIMENSIONS



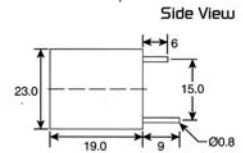
Top View



Side View



Top View



Side View

all dimensions are in mm

ELECTRICAL SPECIFICATIONS

color Black
ABS Housing Material
Pin or Leadwire Terminal

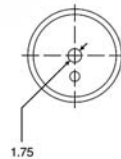
Model No.	ELBSL11S41100	ELBSL11S42200	ELBSL11S3120	ELBSL11S3240
Operating Voltage	96 - 144 VAC	176 - 264 VAC	1 - 18 VDC	18 - 28 VDC
Rated Voltage	110 VAC	220 VAC	12 VDC	24 VDC
* Max. Rated Current (mA.)	5	5	15	20
* Min Sound Output (dBA/30cm)	75	75	88	90
* Frequency (Hz.)	3300±500	3300±500	3300±500	3400±500
Tone Nature	single	single	single	single
Operating Temperature (°C)	-20 - +60	-20 - +60	-20 - +60	-20 - +60
Weight (gm.)	8	8	8	8

* Value applying at rated voltage

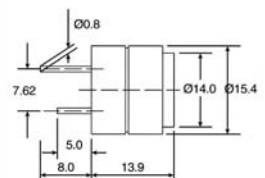
DIMENSIONS



Top View



Side View



all dimensions are in mm

ELECTRICAL SPECIFICATIONS

color Black
ABS Housing Material
Pin Terminal

Model No.	ELBSL13S4050	ELBSL13S4120
Operating Voltage (VDC)	1 - 12	1 - 18
Rated Voltage (VDC)	5	12
* Max. Rated Current (mA.)	15	20
* Min Sound Output (dBA/10cm)	83	85
* Frequency (Hz.)	4000±500	4000±500
Tone Nature	single	single
Operating Temperature (°C)	-10 - +45	-10 - +45
Weight (gm.)	2.5	2.5

* Value applying at rated voltage