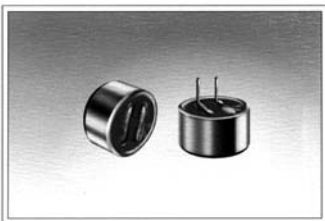


CONDENSER MICROPHONES

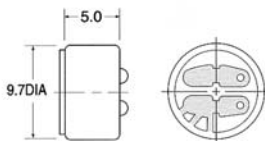
(9.7 × 5.0)

UNIT:mm

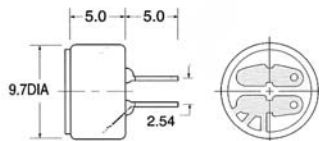


Dimensions

Lead Wire Type



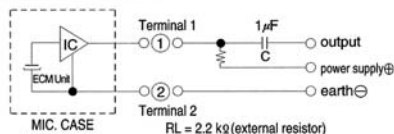
PCB Type



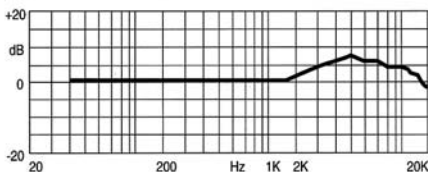
Specifications

Sensitivity	:See Model No. Table
Impedance	:2.2 kΩ Max
Standard Power Supply	:4.5 V DC
Current Consumption	:0.8 mA Max
Sensitivity Reduction	:Within-3dB at 3V
S/N Ratio	:more than 60dB
Directivity	:Omnidirectional

Schematic



Frequency Response



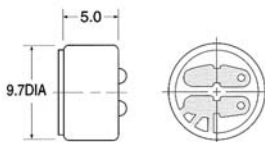
Sensitivity (0dB=1V/pa at 1kHz)	Model No. Table	
	Lead Wire type	PCB Type
-46 ± 2dB	ELMT5046	ELMP5046
-44 ± 2dB	ELMT5044	ELMP5044
-42 ± 2dB	ELMT5042	ELMP5042
-40 ± 2dB	ELMT5040	ELMP5040
-38 ± 2dB	ELMT5038	ELMP5038
-36 ± 2dB	ELMT5036	ELMP5036

(9.7 × 5.0)

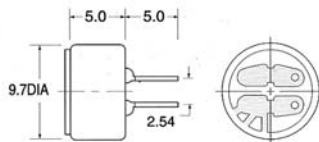


Dimensions

Lead Wire Type



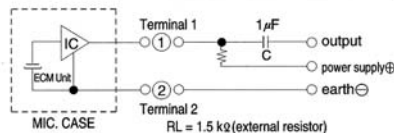
PCB Type



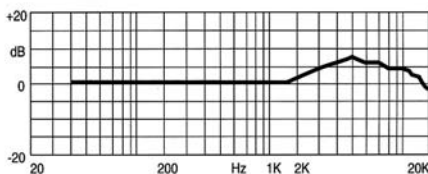
Specifications

Sensitivity	:See Model No. Table
Impedance	:1.5 kΩ Max
Standard Power Supply	:1.5 V DC
Current Consumption	:0.3 mA Max
Sensitivity Reduction	:Within-3dB at 1V
S/N Ratio	:more than 60dB
Directivity	:Omnidirectional

Schematic



Frequency Response



Sensitivity (0dB=1V/pa at 1kHz)	Model No. Table	
	Lead Wire type	PCB Type
-46 ± 2dB	ELMT50H46	ELMP50H46
-44 ± 2dB	ELMT50H44	ELMP50H44
-42 ± 2dB	ELMT50H42	ELMP50H42
-40 ± 2dB	ELMT50H40	ELMP50H40
-38 ± 2dB	ELMT50H38	ELMP50H38