

CONDENSER MICROPHONES

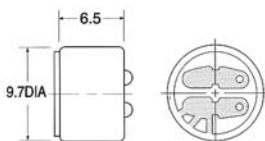
(9.7 × 6.5)

UNIT:mm

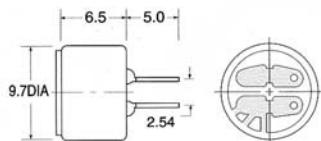


Dimensions

Lead Wire Type



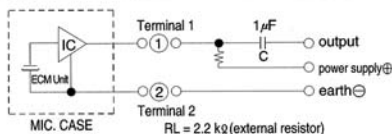
PCB Type



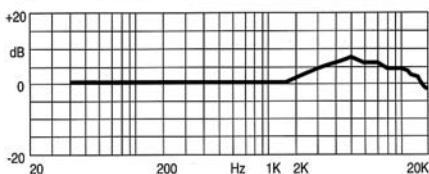
Specifications

Sensitivity	:See Model No. Table
Impedance	:2.2 kΩ Max
Standard Power Supply	:4.5 V DC
Current Consumption	:0.8 mA Max
Sensitivity Reduction	:Within-3dB at 3V
S/N Ratio	:more than 60dB
Directivity	:Omnidirectional

Schematic



Frequency Response



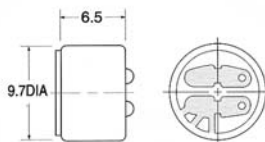
Sensitivity (0dB=1V/pa at 1kHz)	Model No. Table	
	Lead Wire type	PCB Type
-46 ± 2dB	ELMT766	ELMP766
-44 ± 2dB	ELMT764	ELMP764
-42 ± 2dB	ELMT762	ELMP762
-40 ± 2dB	ELMT760	ELMP760
-38 ± 2dB	ELMT758	ELMP758
-36 ± 2dB	ELMT756	ELMP756
-34 ± 2dB	ELMT754	ELMP754

(9.7 × 6.5)

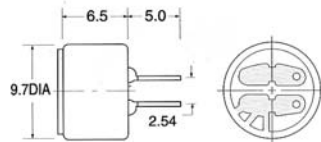


Dimensions

Lead Wire Type



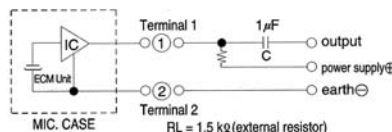
PCB Type



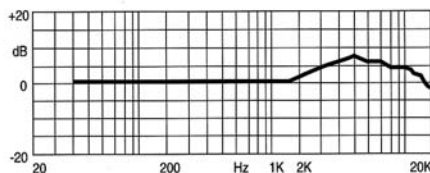
Specifications

Sensitivity	:See Model No. Table
Impedance	:1.5 kΩ Max
Standard Power Supply	:1.5 V DC
Current Consumption	:0.3 mA Max
Sensitivity Reduction	:Within-3dB at 1V
S/N Ratio	:more than 60dB
Directivity	:Omnidirectional

Schematic



Frequency Response



Sensitivity (0dB=1V/pa at 1kHz)	Model No. Table	
	Lead Wire type	PCB Type
-46 ± 2dB	ELMT7H66	ELMP7H66
-44 ± 2dB	ELMT7H64	ELMP7H64
-42 ± 2dB	ELMT7H62	ELMP7H62
-40 ± 2dB	ELMT7H60	ELMP7H60
-38 ± 2dB	ELMT7H58	ELMP7H58