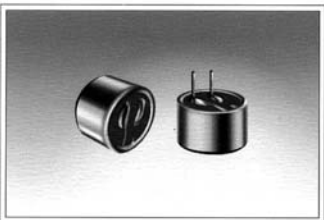


CONDENSER MICROPHONES

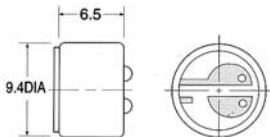
(9.4 × 6.5)

UNIT:mm

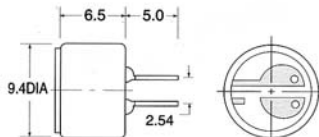


Dimensions

Lead Wire Type



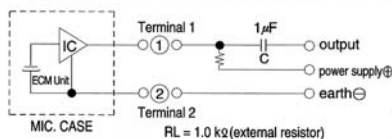
PCB Type



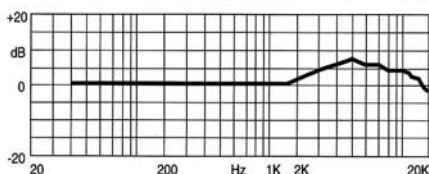
Specifications

Sensitivity	:See Model No. Table
Impedance	:1.0 kΩ Max
Standard Power Supply	:4.5 V DC
Current Consumption	:0.8 mA Max
Sensitivity Reduction	:Within-3dB at 3V
S/N Ratio	:more than 60dB
Directivity	:Omnidirectional

Schematic

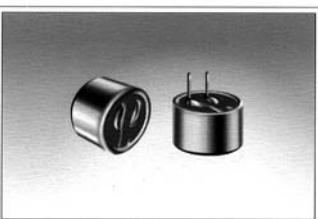


Frequency Response



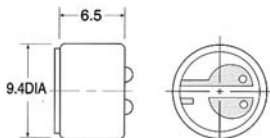
Sensitivity (0dB=1V/pa at 1kHz)	Model No. Table	
	Lead Wire type	PCB Type
-50 ± 2dB	ELMT70	ELMP70
-48 ± 2dB	ELMT68	ELMP68
-46 ± 2dB	ELMT66	ELMP66
-44 ± 2dB	ELMT64	ELMP64
-42 ± 2dB	ELMT62	ELMP62
-40 ± 2dB	ELMT60	ELMP60
-38 ± 2dB	ELMT58	ELMP58

(9.4 × 6.5)

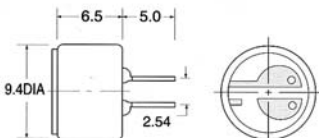


Dimensions

Lead Wire Type



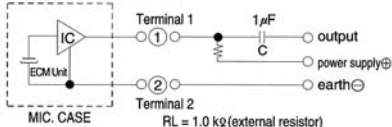
PCB Type



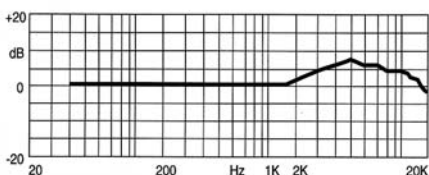
Specifications

Sensitivity	:See Model No. Table
Impedance	:1.0 kΩ Max
Standard Power Supply	:1.5 V DC
Current Consumption	:0.3 mA Max
Sensitivity Reduction	:Within-3dB at 1V
S/N Ratio	:more than 60dB
Directivity	:Omnidirectional

Schematic



Frequency Response



Sensitivity (0dB=1V/pa at 1kHz)	Model No. Table	
	Lead Wire type	PCB Type
-50 ± 2dB	ELMT70H	ELMP70H
-48 ± 2dB	ELMT68H	ELMP68H
-46 ± 2dB	ELMT66H	ELMP66H
-44 ± 2dB	ELMT64H	ELMP64H
-42 ± 2dB	ELMT62H	ELMP62H
-40 ± 2dB	ELMT60H	ELMP60H
-38 ± 2dB	ELMT58H	ELMP58H